

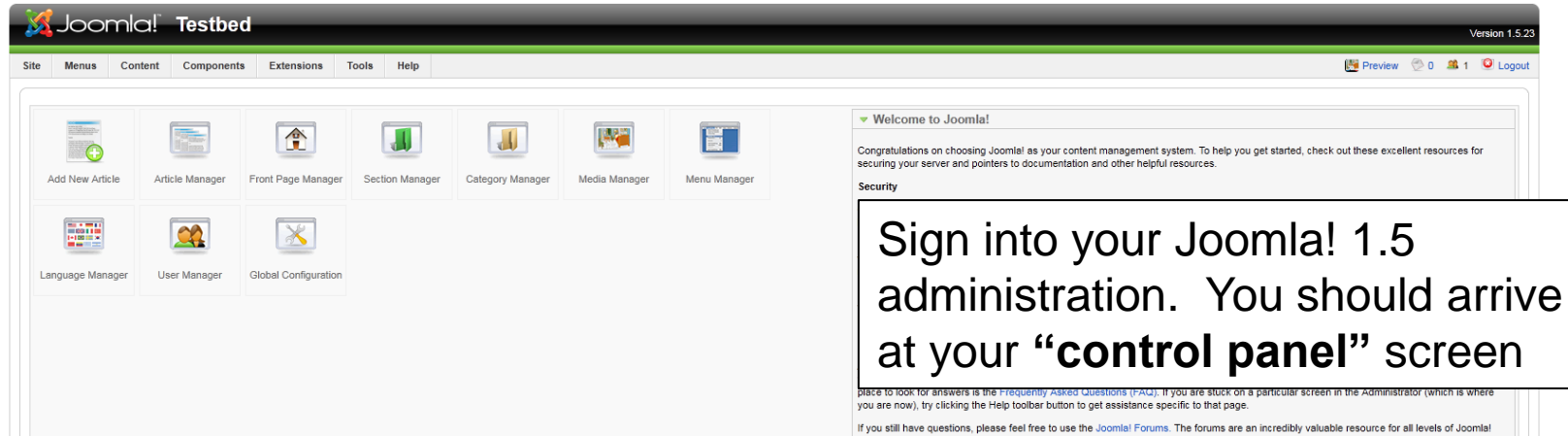
# S5 Customising a Template Logo Tutorial

<http://www.shape5.com>

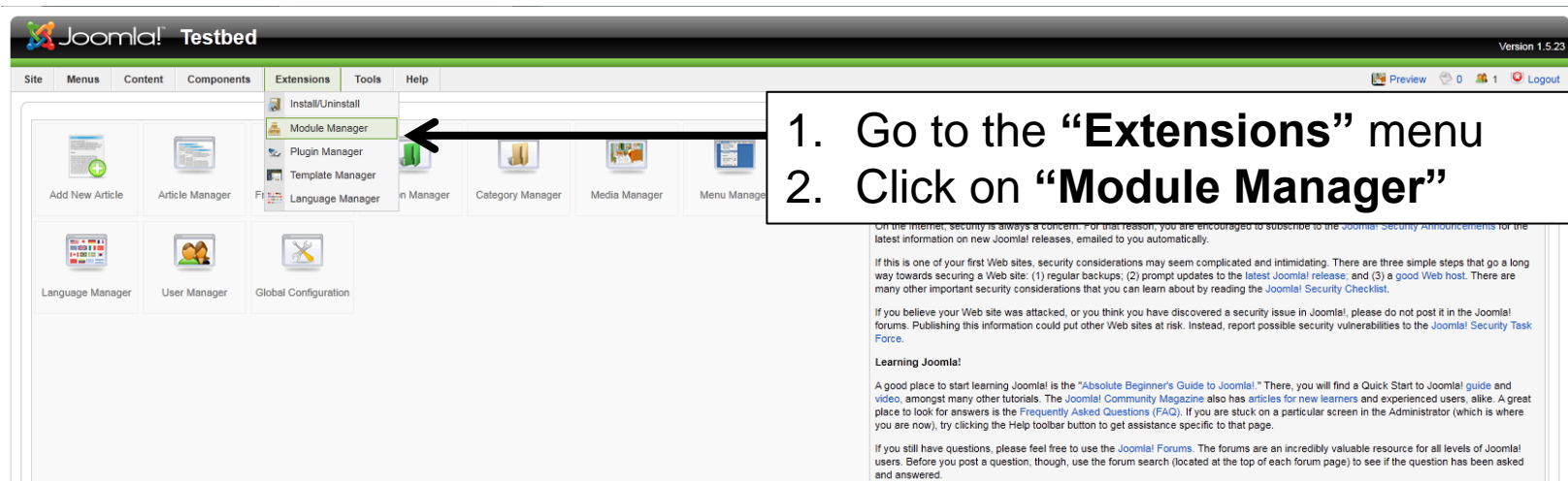


First download and install the Joomla! 1.5 template that you wish to use from the Shape5 website – [www.shape5.com](http://www.shape5.com)  
For instructions on how to install a template please see the installing a template tutorial  
Please be aware that only templates released after September 2010 (“Get Reserved” onwards) have the option to [install a logo as a module](#) available. For all other templates please use the [second version](#) of the logo template installation.

## Install the logo as a module



Sign into your Joomla! 1.5 administration. You should arrive at your “control panel” screen



1. Go to the “**Extensions**” menu
2. Click on “**Module Manager**”

Joomla! Testbed Version 1.5.23

Site Menus Content Components Extensions Tools Help

Preview 0 1 Logout

### Module Manager

Enable Disable Copy Delete **New** Help

Site Administrator

Filter: [ ] Go Reset

#	Module Name	Enabled	Order	Access Level	Position	Pages	Type	ID
1	Breadcrumbs	✓	1	Public	breadcrumb	All	mod_breadcrumbs	35
2	Banners	✓	1	Public	footer	All	mod_banners	30
3	Footer	✓	2	Public	footer	All	mod_footer	33
4	Main Menu	✓	1	Public	left	All	mod_mainmenu	1
5	Resources	✓	2	Public	left	Varies	mod_mainmenu	31
6	Key Concepts	✓	3	Public	left	All	mod_mainmenu	40

Click on "New" in the top right

Joomla! Testbed Version 1.5.23

Site Menus Content Components Extensions Tools Help

Preview 0 1 Logout

### Module: [New]

Site Administrator

1. Select "Custom HTML"
2. In the top right hand corner click "Next"

Archived Content  
Banner  
Breadcrumbs  
**Custom HTML**  
Feed Display  
Footer  
Latest News  
Login  
Menu  
Most Read Content  
Newsflash

Custom HTML  
This Module allows you to create your own HTML Module using a WYSIWYG editor.

Poll  
Random Image  
Related Articles  
S5 Tab Show  
Search  
Sections  
Statistics  
Syndicate  
Who's Online  
Wrapper

Next Cancel Help

The screenshot displays the Joomla! 1.5.23 administration interface for editing a module. The interface is organized into several sections:

- Details Section:** Contains configuration options for the module, including:
  - Module Type: `mod_custom`
  - Title: (text input field)
  - Show Title: Radio buttons for  No and  Yes
  - Enabled: Radio buttons for  No and  Yes
  - Position: Dropdown menu set to `left`
  - Order: Dropdown menu set to `0:Main Menu`
  - Access Level: Dropdown menu set to `Public`
  - ID: `0`
  - Description: `This Module allows you to create your own HTML Module using a WYSIWYG editor.`
- Parameters Section:** Contains a 'Module Parameters' section with a 'Module Class Suffix' text input field.
- Menu Assignment Section:** Shows 'Menu Selection' with radio buttons for  All,  None, and  Select Menu Item(s) from the List. A list of menu items is displayed, with 'Section Blog' selected.
- Custom Output Section:** Features a WYSIWYG editor with a toolbar and a 'Paragraph' style selected.

## Details Section:

1. Fill in the **“Title”** with a memorable title
2. From **“Show Title”** select **“Hide”**
3. From **“Enabled”** select **“Yes”**
4. Click on the **“Position” drop down menu** and choose **“Logo”**
5. From the **“Order”** drop down menu choose the order the logo should be in. Generally there should only be one *enabled* item in logo so the order should not make a difference.
6. From the **“Access Level”** select box, choose **“Public”** in order to ensure the logo is available to everyone

The screenshot shows the Joomla! administrator interface for configuring a custom module. The page is divided into four main sections, each highlighted with a colored box and a label:

- Details Section (purple box):** Contains fields for Module Type (mod\_custom), Title, Show Title (radio buttons), Enabled (radio buttons), Position (dropdown), Order (dropdown), Access Level (dropdown), and ID. A description at the bottom states: "This Module allows you to create your own HTML Module using a WYSIWYG editor."
- Parameters Section (red box):** Contains a field for Module Class Suffix.
- Menu Assignment Section (blue box):** Contains a list of menu items to be assigned, including "Section Blog", "Section Table", "Category Blog", "Category Table", "Extensions", "Content Layouts", "Example Pages", "Home", "Joomla! Overview", "What's New in 1.5?", "Joomla! License", and "More about Joomla!".
- Custom Output Section (grey box):** Contains a WYSIWYG editor with a toolbar and a text area.

## Menu Assignment Section:

1. From the Menu Assignment Section **select "All"** unless you wish the logo to only appear on certain pages

## Custom Output Section:

This section depends on which *editor* you are using, which is determined in the "Global Configuration" options in the main control panel under the "Site" menu.

This tutorial assumes that you are using the standard Joomla! 1.5 editor. If you are not using a standard editor the actions you need to undertake involve knowing how to add an image to the custom output main window.

**Instructions continued on the next page**

Module: [Edit]

Details Section

Parameters Section

Save Apply Cancel Help

Details

Module Type: *mod\_custom*

Title:

Show Title:  No  Yes

Enabled:  No  Yes

Position: left

Order: 0: Main Menu

Access Level: Public

ID: 0

Description: This Module allows you to create your own HTML Module using a WYSIWYG editor.

Parameters

Module Parameters

Module Class Suffix:

Menu Assignment Section

Menu Assignment

Menus:  All  None  Select Menu Item(s) from the List

Menu Selection:

- Example Pages
  - Section Blog
  - Section Table
  - Category Blog
  - Category Table
- Keyconcepts
  - Extensions
  - Content Layouts
  - Example Pages
- mainmenu
  - Home
  - Joomla! Overview
  - What's New in 1.5?
  - Joomla! License
  - More about Joomla!

Custom Output Section

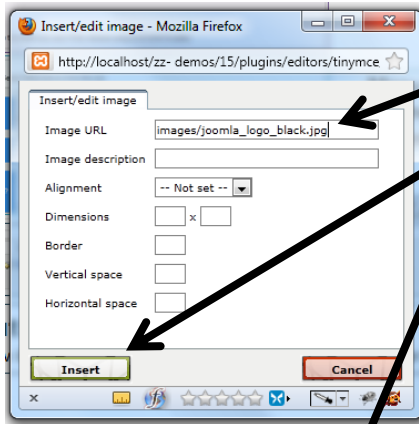
Custom Output

Styles: Paragraph

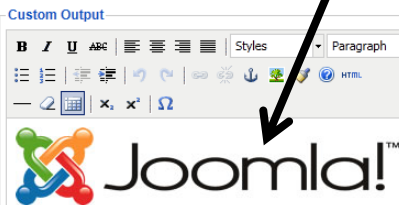
HTML icon

Custom Output Section:

You need to add a new image. To do so using the default Joomla! 1.5 editor select the icon that looks like a picture of a tree  
Instructions continued on the next page



1. The "Insert/Edit image" **popup box will appear**
2. In "**Image URL**" type in the address of the image, you can use relative addresses
3. Click "**Insert**"
4. If you have correctly implemented the above instructions the **image** you have chosen **should appear** in the "**Custom Output**" box
5. Select "**Save**" from the top right hand corner of the page
6. Your logo should now show on your website. Go to your site and refresh it to see if it is working



**Joomla! Testbed** Version 1.5.23

Site Menus Content Components Extensions Tools Help

Module: [Edit] Save Apply Cancel Help

**Details**

Module Type: *mod\_custom*

Title: logolicious

Show Title:  No  Yes

Enabled:  No  Yes

Position: left

Order: 0: Main Menu

Access Level: Public

ID: 0

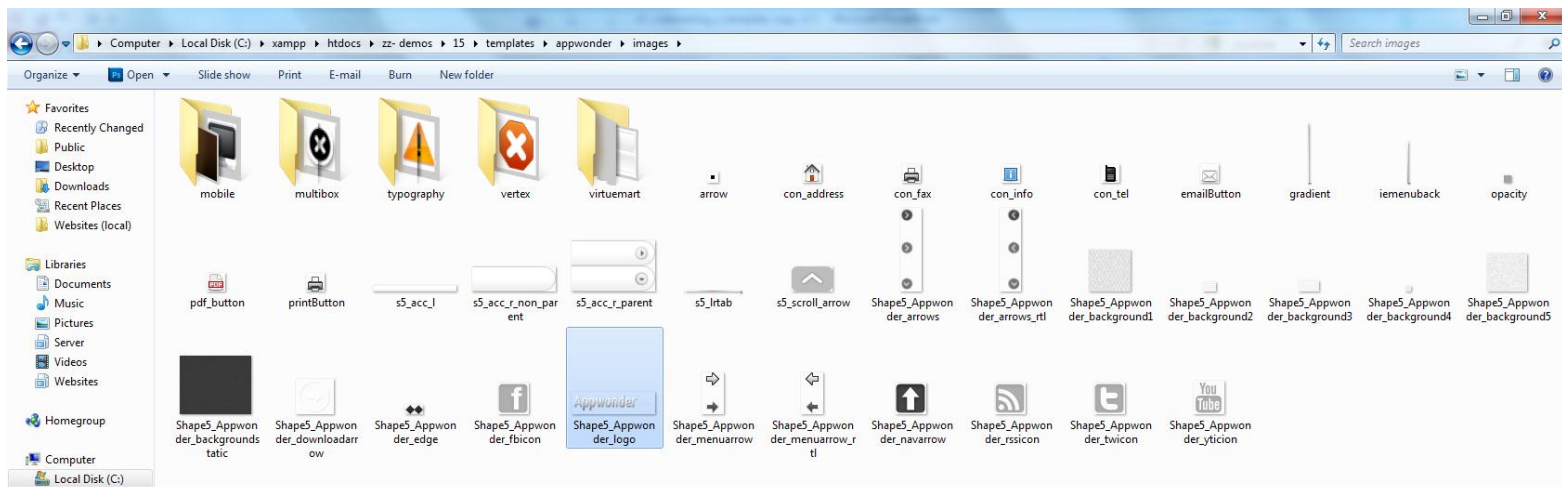
**Parameters**

Module Parameters

Module Class Suffix

# Install the logo manually without using a module

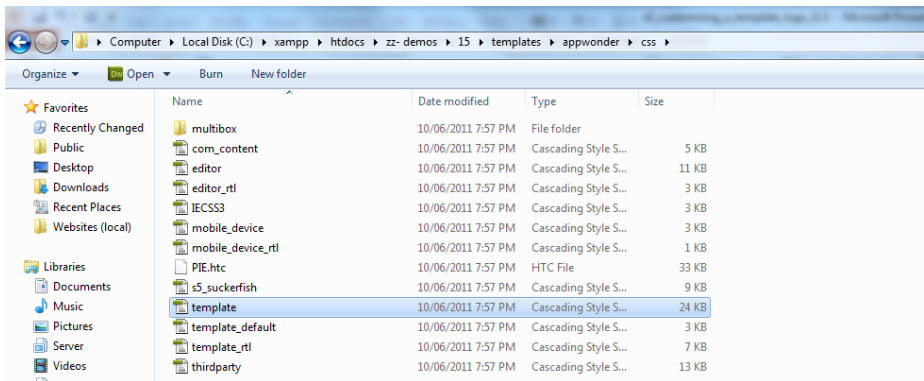
1. There are two methods to replace the image.
  - a) The first is to replace the image with an image of exactly the same name, dimensions, and format. This method is slightly simpler in that you do not need to understand CSS to undertake these actions.
  - b) The second is to edit the CSS file so that you can change the name of the image. It could be argued that this method is the better of the two if you are naming your images deliberately with SEO in mind.
2. **Method 1: Replacing the current logo image by overwriting it with another**
  1. First **locate the current logo** in the template
  2. To do this you can simply view the template, right click on the logo and go to **“view background image”**
  3. This should tell you the location of the background image. The logo will always be in the **template** you are using’s **images folder**. For example “templates/appwonder/images/”.
    - a) You can find this folder by going to the main Joomla! folder for your site.
    - b) Then go into the “templates” folder, and then into the folder named after the template you are using.
    - c) Then go into the images folder.
  4. The logo will be named either “s5\_logo” or “shape5\_*templatename*\_logo” where templatename is the name of the template that you are using.
  5. You can **open it in your image editing software**, edit it or replace it as necessary, then save it in the same place with the same name, dimensions, and format. This will mean you do not have to edit the CSS.



It is assumed that you have some basic knowledge of CSS in order to undertake these actions. If you wish to know more about CSS there are many great resources around the net.

### 1. Method 2: Changing the CSS to point at your new logo

1. You need to **locate the CSS file** relating to your template.
2. Go into the **templates folder**, and find the folder named after your template for example “templates/appwonder”
3. Then go into the **CSS folder**. For example “templates/appwonder/CSS”
4. Now **open the CSS file** that you require. Usually “**template.css**” is the standard CSS file that you require, however, the name can vary such as “template\_css.css”. There may be more than one CSS file that you need to edit, for example there may be mobile versions of CSS, rtl versions etc.
5. Once you have opened this file in your editor of choice, **search for “s5\_logo”**
6. You should see a reference to “**background**” or “background-image”.
7. Replace the URL to **point to the image you wish to use**.



```
/* Layout
----- */
#s5_logo {
float:left;
height:94px;
margin-bottom:0px;
margin-left:0;
margin-top:22px;
width:50%;
background: url(../images/Shape5_fusion_logo.png) no-repeat;}
```