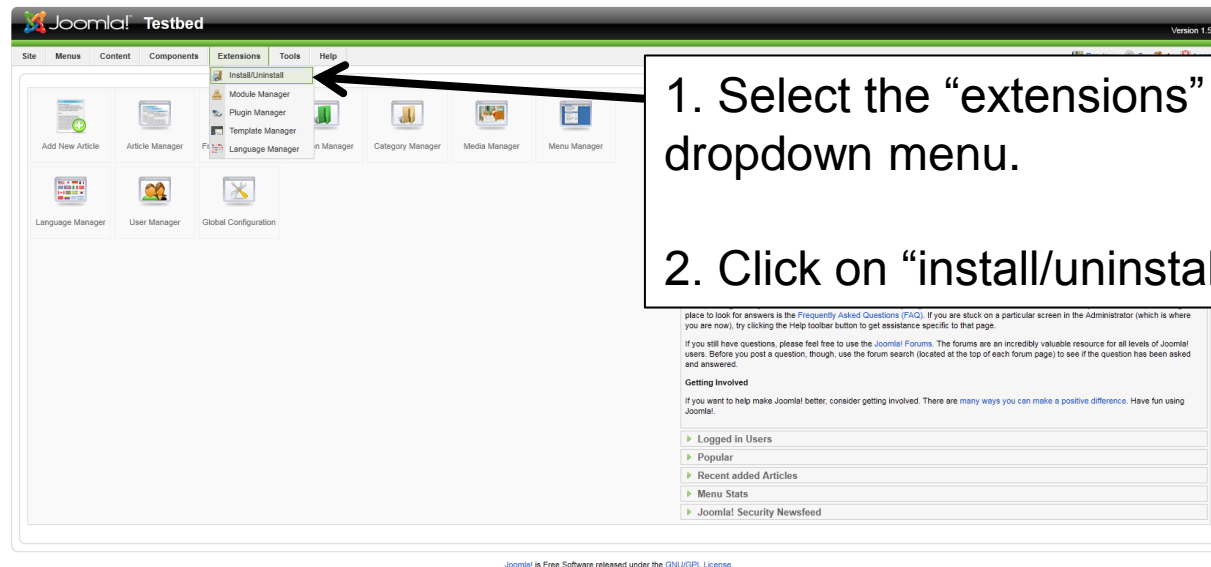
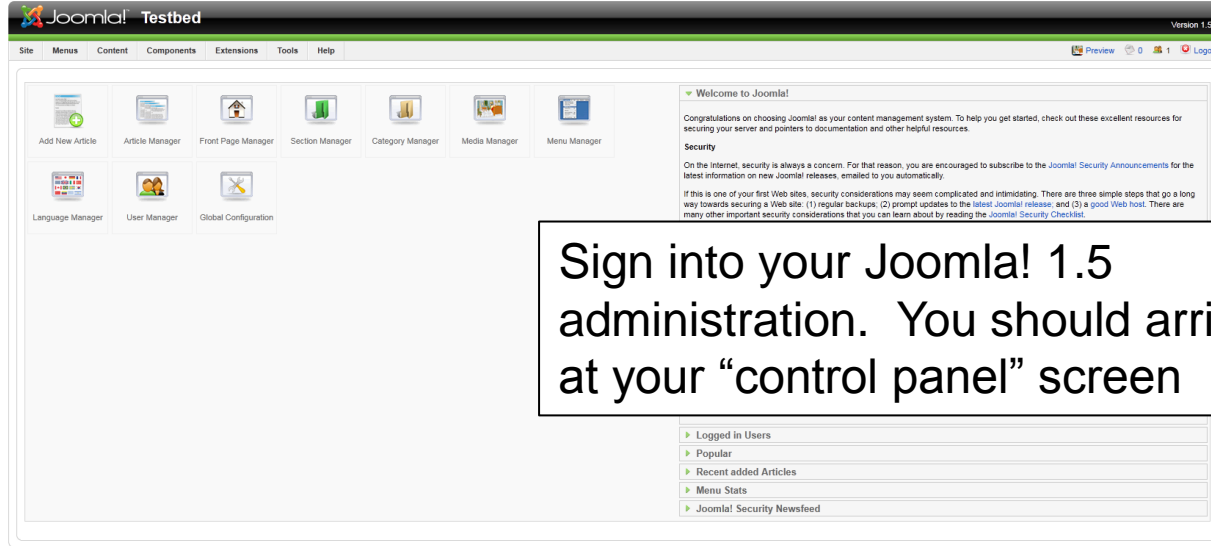


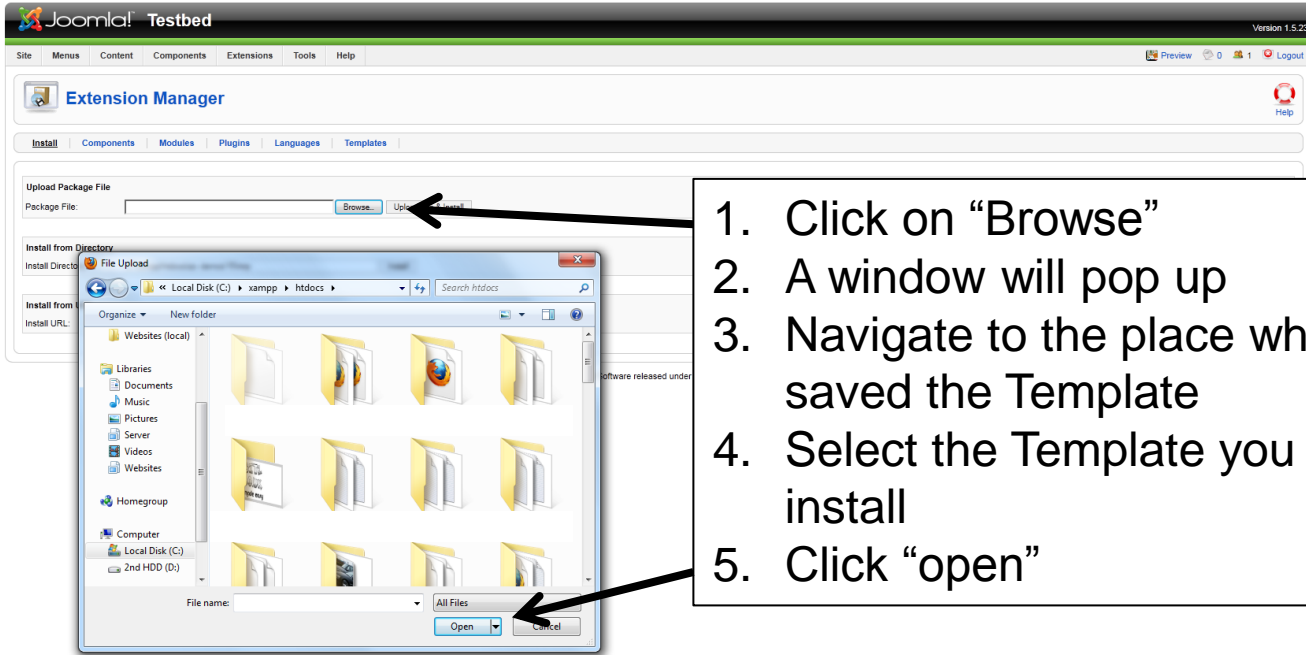
S5 Installing a Template Tutorial

<http://www.shape5.com>

First download the Joomla! 1.5 template that you wish to install from the Shape5 website – www.shape5.com

Install the Template as follows

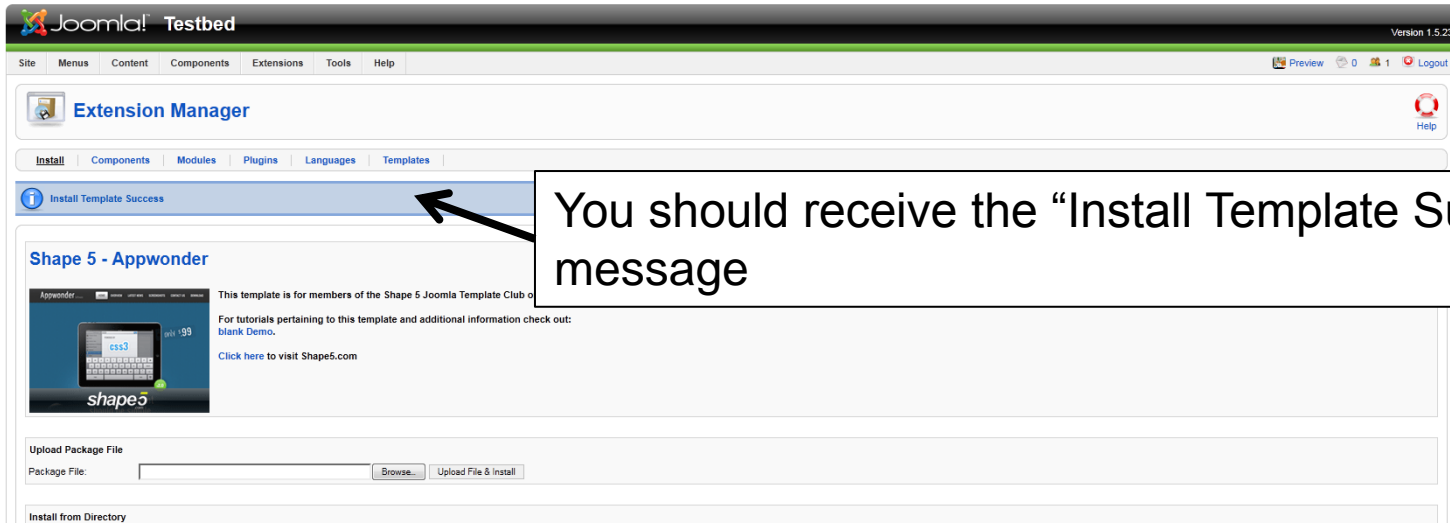




1. Click on “Browse”
2. A window will pop up
3. Navigate to the place where you have saved the Template
4. Select the Template you want to install
5. Click “open”

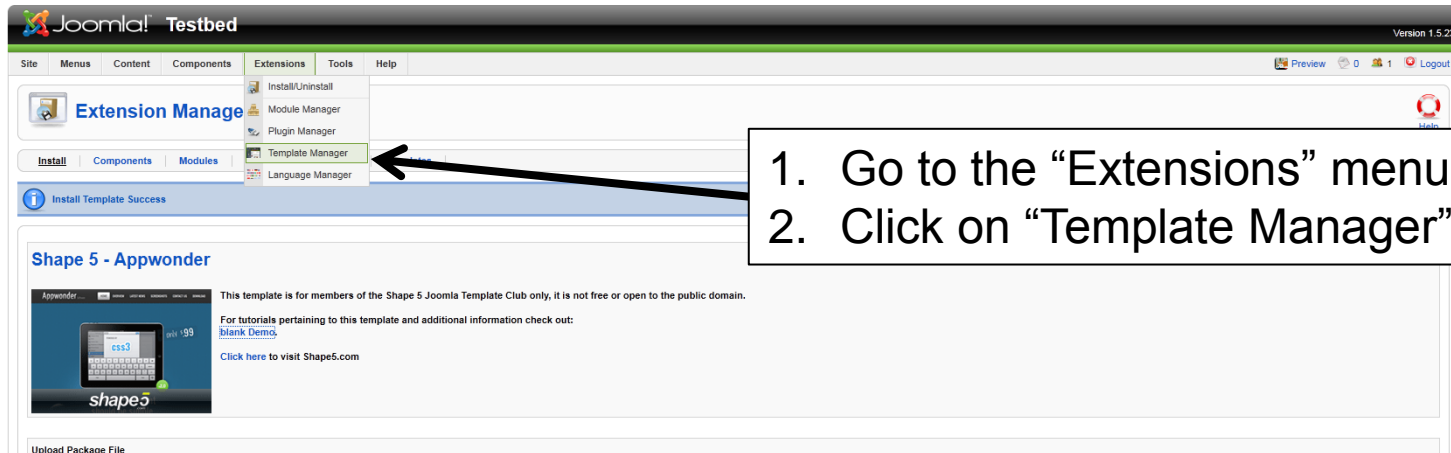


Joomla! is Free Software released under the GNU/GPL License.



You should receive the “Install Template Success” message

Configure the Template as required



Joomla! Testbed Version 1.5.23

Site Menus Content Components Extensions Tools Help

Preview 0 1 Logout

Template Manager

Site Administrator

#	Template Name	Default	Assigned	Version	Date	Author
1	Appwonder	<input checked="" type="radio"/>		1.0	May 2011	Shape5.com
2	beez	<input type="radio"/>		1.0.0	19 February 2007	Angie Radtke/Robert Deutz
3	JA_Purity	<input type="radio"/>		1.2.0	12/26/07	JoomlaArt.com
4	rhuk_milkyway	<input type="radio"/>				

1. Select the radio button next to the template that you have installed
2. Click on the "Default" star in the top right hand corner
3. Now your template will be the one that Joomla! uses when displaying your website

Joomla! Testbed Version 1.5.23

Site Menus Content Components Extensions Tools Help

Preview 0 1 Logout

Template Manager

Site Administrator

#	Template Name	Default	Assigned	Version	Date	Author
1	Appwonder	<input checked="" type="radio"/>		1.0	May 2011	Shape5.com
2	beez	<input type="radio"/>		1.0.0	19 February 2007	Angie Radtke/Robert Deutz
3	JA_Purity	<input type="radio"/>		1.2.0	12/26/07	JoomlaArt.com
4	rhuk_milkyway	<input type="radio"/>		1.0.2	11/20/06	Andy Miller

Display # 20

Click on the name of the template to configure it

Joomla! is Free Software released under the GNU/GPL License.

The screenshot shows the Joomla! Testbed interface for configuring the 'Appwonder' template. The page is divided into three main sections:

- Details Section:** Located at the top left, it provides information about the template. The name is 'Appwonder' and the description is 'Shape 5 - Appwonder'. It includes a small image of the template and a link to visit Shape5.com.
- Menu Assignment Section:** Located below the details section, it allows users to assign the template to different parts of the site. The 'Menu Selection' dropdown is currently set to 'None', and a list of menu items is visible for selection.
- Parameters Section:** Located on the right side, it contains various configuration options for the template. These include:
 - Template Specific Options:** Fields for Facebook Text, Twitter URL, RSS URL, YouTube URL, Highlight Site Font, and several area IDs (e.g., #s5_top_row1_area1, #s5_center_area1, #s5_bottom_row1_area1).
 - Layout, Fonts, and Appearance Options:** Options for 'Enable Font Resizer?' (Yes/No), 'Site Font' (Arial), and 'Fixed or Fluid Layout?' (Fixed).
 - Menu Options:** Fields for 'Menu Name' (mainmenu), 'Menu Type' (Scroll Down Menu), and 'Effect Script' (jQuery).

Details Section

The details section provides a synopsis on the template, and a link to the template demo where you can find tutorials for the extensions used within the template demo, and an example usage of the template.

Menu Assignment Section

The "Menu Assignment" section provides you the option to assign different templates to different parts of your site. Choose "none" to let the default template rule the whole site, or choose "select from list" to use different templates for different parts of the site. The part of the site that the template is used upon will be decided by selecting different links from the menu. The template will only appear on those parts of the site.

The screenshot displays the Joomla! Testbed interface for configuring the 'Appwonder' template. The top navigation bar includes 'Site', 'Menus', 'Content', 'Components', 'Extensions', 'Tools', and 'Help'. The right side of the top bar shows 'Version 1.5.23', 'Preview', and 'Logout'.

Details Section: Shows the template name 'Appwonder' and description 'Shape 5 - Appwonder'. It includes a small image of the template and text stating it is for members of the Shape 5 Joomla! Template Club only. A link to visit Shape5.com is provided.

Menu Assignment Section: Shows a 'Menu Selection' list with options like 'ExamplePages', 'Section Blog', 'Section Table', 'Category Blog', 'Category Table', 'Extensions', 'Content Layouts', 'Example Pages', 'mainmenu', 'Home', 'Joomla! Overview', '- What's New in 1.5?', 'Joomla! License', and 'More about Joomla!'.

Parameters Section: Contains various configuration options:

- Social Media:** Facebook Text, Twitter URL, RSS URL, YouTube URL (all with 'javascript:' input fields).
- Highlight Site Font:** Dropdown menu set to 'Oswald'.
- Area IDs:** #s5_top_row1_area1 (#28698e), #s5_top_row2_area1 (#576A75), #s5_center_area1 (#28698e), #s5_bottom_row1_area1 (#3939), #s5_bottom_row2_area1 (#545454), #s5_bottom_row3_area1 (#28698e).
- Layout, Fonts, and Appearance Options:**
 - Enable Font Resizer? (Yes/No radio buttons, 'Yes' selected)
 - Site Font: Dropdown menu set to 'Arial'
 - Fixed or Fluid Layout?: Dropdown menu set to 'Fixed'
 - Body Width: 975
 - Left Width: 254
 - Left Inset Width: 200
 - Right Width: 300
 - Right Inset Width: 150
- Menu Options:**
 - Menu Name: Dropdown menu set to 'mainmenu'
 - Menu Type: Dropdown menu set to 'Scroll Down Menu'
 - Effect Script: Dropdown menu set to 'jQuery'

Parameters Section

The parameters section of the Template Configuration will be different for every template. Often you can configure precise parts of the template. You should always check the Template Configuration to ensure that the parameters are set correctly for your site, often you will discover options which need to be configured such as font colour for example.

Changing the Logo of the template

In the newer Shape5 Templates we have made it easier to change the logo using a by using a module, please see the separate changing logo tutorial for instructions on how to do this. For older templates simply replace the current logo image with an image of the same name.